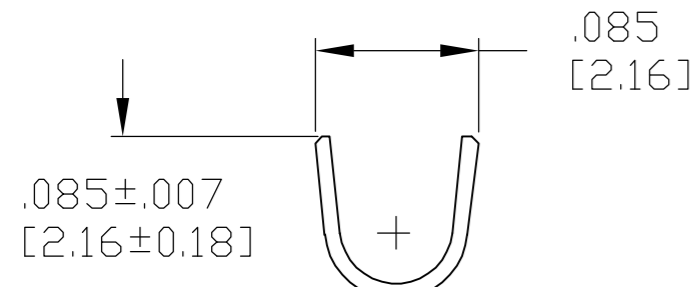
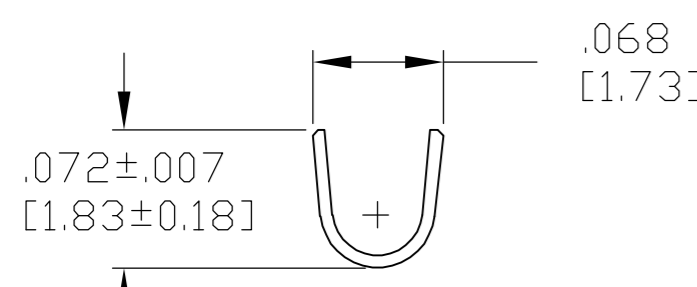


THIS DRAWING IS UNPUBLISHED. RELEASED FOR PUBLICATION - N/A .  
 © COPYRIGHT N/A BY TYCO ELECTRONICS CORPORATION. ALL RIGHTS RESERVED.

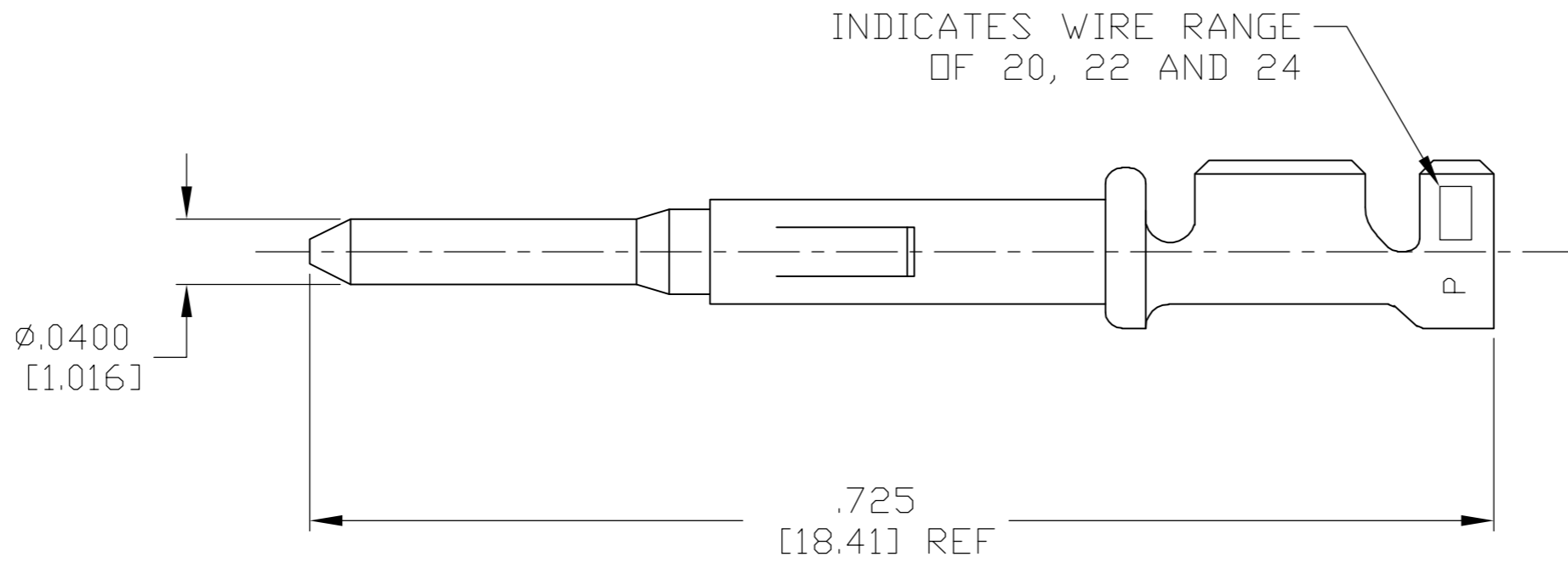
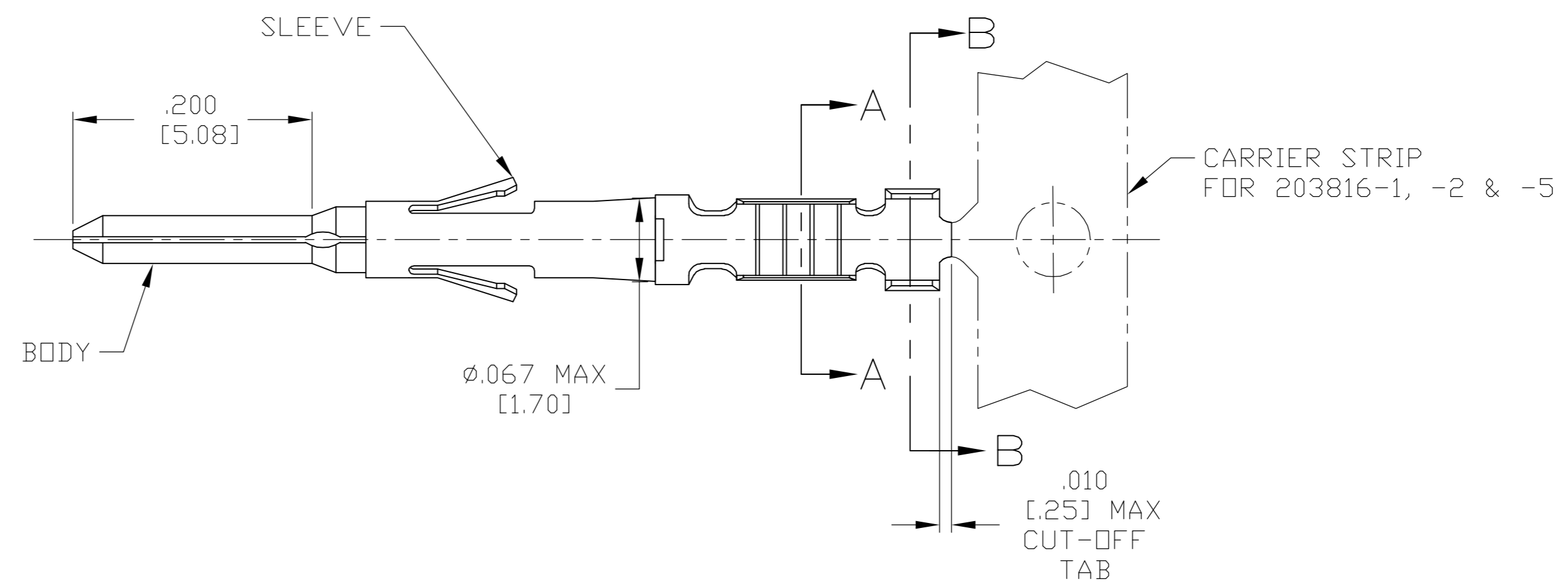
LOC	DIST	REVISIONS			
P	LTR	DESCRIPTION	DATE	DWN	APVD
DF	A5	W	REV PER OH14-0292-05	3-29-05	CT DM



SECTION B-B  
INSULATION BARREL



SECTION A-A  
WIRE BARREL



- 1 MATERIAL: BODY: BRASS PER ASTM-B-19  
SLEEVE: STAINLESS STEEL PER ASTM-A-240.
- 2 FINISH: .000030 MIN THK GOLD PER ASTM-B-488  
OVER .000050 MIN THK NICKEL PER AMS-QQ-N-290.
- 3 FINISH: SELECTIVE .000030 MIN THK GOLD PER ASTM-B-488  
OVER .000050 MIN THK NICKEL PER AMS-QQ-N-290.
- 4 FINISH: .000150 MIN TIN OVER NICKEL FLASH.  
CAUTION: USE OF TIN PLATED TERMINALS IN CERTAIN ENVIRONMENT MAY CAUSE NON-COMFORMANCE TO TYCO PRODUCT SPECIFICATION 108-10015.
- 5. WIRE RANGE: 20, 22 & 24 AWG  
INSULATION RANGE: .062 MAX.  
HAND CRIMPING TOOL: TYCO P/N 90260-1  
EXTRACTION TOOL: TYCO P/N 91038-3  
INSERTION TOOL: TYCO P/N 91042-1
- 6. PART NUMBERS 203816-7 THRU 1-203816-6 ARE OBSOLETE.

LOOSE PIECE	4	1	203816-6
ON STRIP	4	1	203816-5
LOOSE PIECE	3	1	203816-4
LOOSE PIECE	2	1	203816-3
ON STRIP	3	1	203816-2
ON STRIP	2	1	203816-1
REMARKS	FINISH	MATERIAL	PART NO.

THIS DRAWING IS A CONTROLLED DOCUMENT.		DWN C.C.THOMAS 3-29-05	Tyco Electronics Corporation Harrisburg, Pa 17105-3608	
DIMENSIONS: INCHES [mm]		CHK D.MILLER 3-29-05		
TOLERANCES UNLESS OTHERWISE SPECIFIED:		APVD D.MILLER 3-29-05	NAME PIN CONTACT ASSY, SIZE 20 (20-24 AWG)	
0 PLC ± - 1 PLC ± - 2 PLC ± - 3 PLC ± .005 [0.13] 4 PLC ± .0015 [0.038] ANGLES ± -		APPLICATION SPEC	SIZE CAGE CODE DRAWING NO RESTRICTED TO	
MATERIAL SEE TABLE		FINISH SEE TABLE	A2 00779 C=203816	
WEIGHT		CUSTOMER DRAWING		SCALE 10:1 SHEET 1 OF 1 REV W